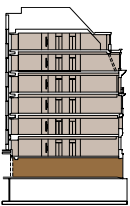
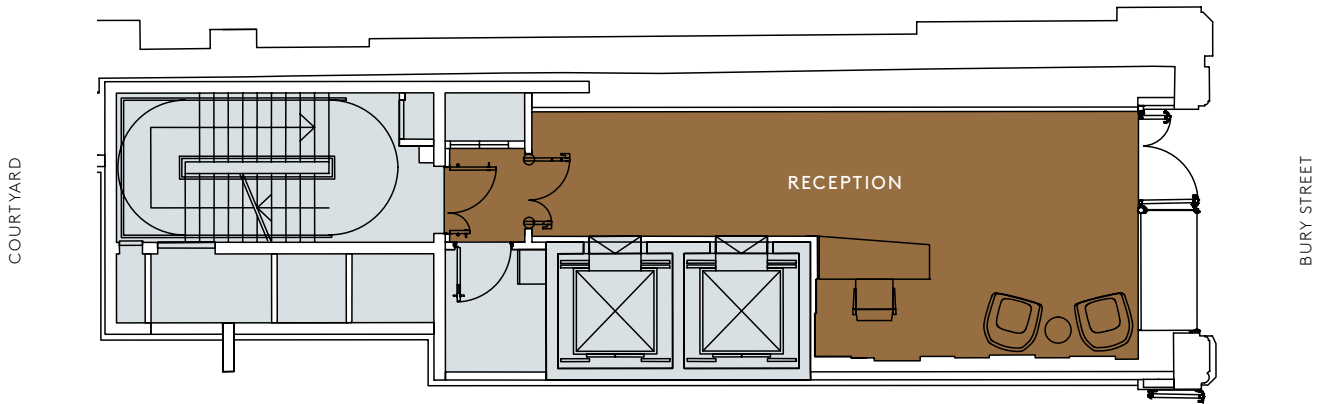


# 25 BURY STREET

ST JAMES'S SW1

## RECEPTION

263 SQ FT (24.4 SQ M)



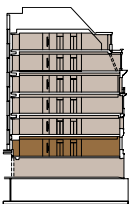
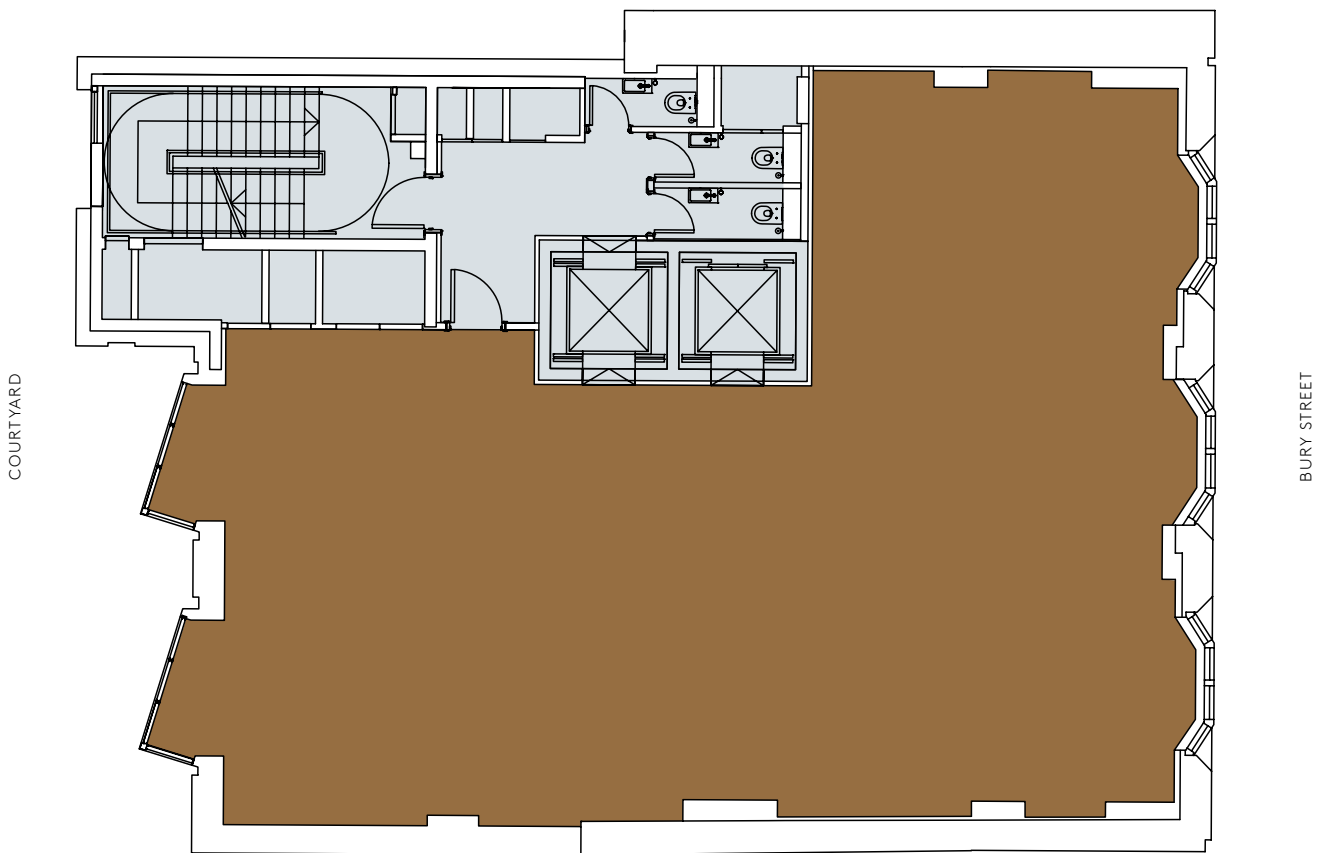
For indicative purposes only, not to scale.

# 25 BURY STREET

ST JAMES'S SW1

## FIRST FLOOR

1,701 SQ FT (158.0 SQ M)



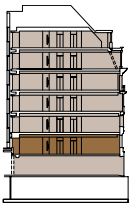
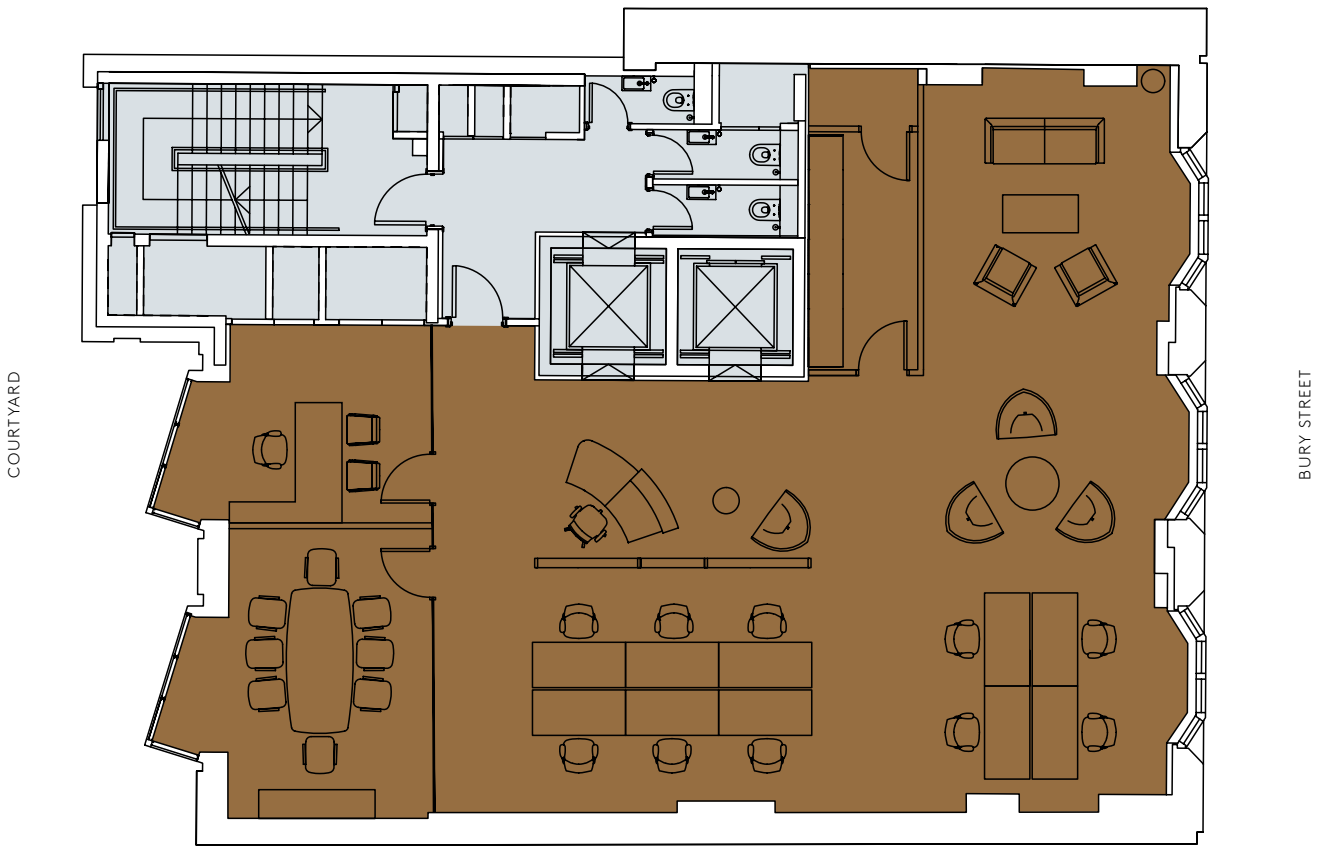
For indicative purposes only, not to scale.

# 25 BURY STREET

ST JAMES'S SW1

## FIRST FLOOR - ALTERNATE LAYOUT

1,701 SQ FT (158.0 SQ M)



- 1 x Receptionist
- 10 x Open Plan Desks
- 1 x Executive Office
- 1 x 8 Person Meeting Room
- 1 x Informal Meeting Area



For indicative purposes only, not to scale.